



BEST PRACTICES FOR
MAINTAINING
YOUR HORNER ATHLETIC
HARDWOOD FLOOR

BECAUSE WE KNOW YOUR BIGGEST INVESTMENT IS YOUR ATHLETE.



The world leader in sports flooring since 1891



Horner Flooring is the oldest and longest-standing member of the Maple Flooring Manufacturers Association (MFMA), with maple sports flooring roots dating back to 1891 – the same year the game of basketball was invented by Dr. James Naismith.

FIND US ELSEWHERE



www.hornerflooring.com



@HornerFloor



<http://www.facebook.com/HornerFlooring>

TABLE OF CONTENTS

4	Warranty
5	Sport vs. Non-sport Use
6	Floor Care Essentials
7	Maintenance and Floor Mats
8	Floor Care Habits
10	Ventilation and Temperature
11	Shoe Mark Removal
12	Moisture and Water Damage
13	Tightening and Cupping
14	Excessive Gaps
15	Bleacher Systems
16	Gum and Tar Removal
17	Regular Restorative Coating
18	Contact Us
19	Photo Credits

BEST PRACTICES FOR MAINTAINING YOUR HORNER FLOOR



A Horner Floor for the NBA in London

To be in compliance with warranty conditions, it is the responsibility of the facility owner/managers to maintain their Horner floor under the recommendations outlined in floor specifications and maintenance instructions.

Performance and durability are best “maintained” by proper control of relative humidity and temperature. Areas containing wood flooring perform best by providing adequate air circulation by mechanical or natural means.

Note: Different geographical regions may require varied degrees of control. Please consult your HVAC provider or your local Horner Flooring Representative for more information.

CHAPTER 1:

SPORT VS. NON SPORT USE

Your wood sports floor is designed to take the rigors of multiple sports activities. In addition, non-sports activities may be an essential part of your facilities usage. Horner Flooring recommends that your care and maintenance program be designed to accommodate other activities.

Please consult Horner Flooring and your local representative to help in designing a maintenance system for all your uses.

USE IT... BUT DON'T ABUSE IT!



Basketball on a Horner Floor

CHAPTER 2:

FLOOR CARE ESSENTIALS



DUST MOPPING



WET TACKING



SHOE MARK REMOVAL



GUM REMOVAL



POLY-BASED SPILL



WATER-BASED SPILL

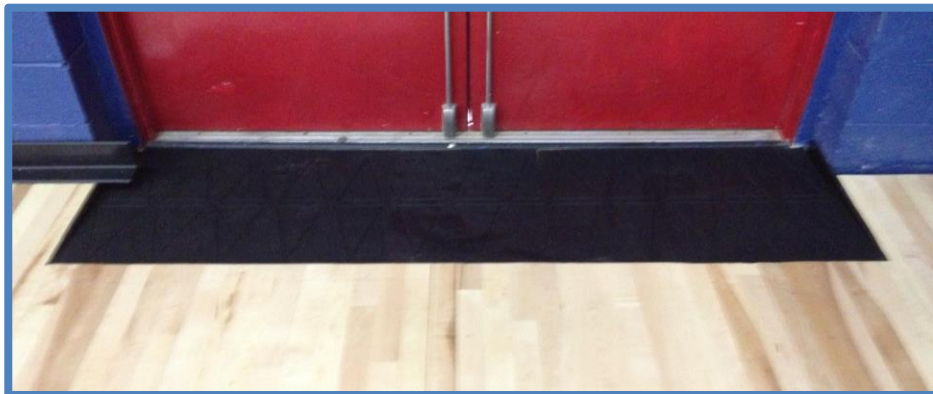
CHAPTER 3:

MAINTENANCE PRODUCTS AND MATS

Before any floor care or refinishing products are used, it may be helpful to do a full review with your installation/maintenance professional (who can be recommended by Horner Flooring).

ENTRANCE/WALK-OFF MATS

Depending on the outside areas specific to your floor, catching dirt and dust before it gets on the floor is one of the best ways to extend its appearance and performance. Place walk-off and entrance mats designed to catch dirt and grit in heavy traffic areas (i.e. directly outside or at the entrances of the floor). Regular cleaning and vacuuming of mats will ensure quality results!



Entrance mat for a Horner floor

CHAPTER 4:

FLOOR CARE HABITS

DAILY FLOOR CARE

To protect the finish, appearance, and performance of your floor, it's essential that sweeping/mopping is done daily.

Dust, dirt, and debris are best removed with the recommended mop and floor cleaner.

Proper daily cleaning maintains the correct surface friction and athletic performance characteristics by reducing slips and inconsistent stops.



A maintained Horner floor

MONTHLY FLOOR CARE

Your maple floor should be treated with an approved floor cleaner monthly. If an auto scrubber is used, make sure proper training and performance is maintained.



A Horner floor being sanded down

YEARLY FLOOR CARE

We recommend that your maple floor be cleaned, screened, and recoated annually with an approved finish.

Your warranty may be affected by product and contractor usage. Please consult your warranty and Horner Sports Flooring Representative before beginning this procedure. Please see Yearly/Restorative Coating section.

CHAPTER 5:

VENTILATION AND TEMPERATURE

Your system is designed to withstand normal variations in humidity and temperature. A fully functional HVAC system (set to maintain a temperature at 55-75°F) that provides proper ventilation will prevent changes in the floor's shape and appearance.

If the humidity increases more than 55%, immediately create air movement and dehumidify. We recommend regularly inspecting the space during warm humid seasons.

Air circulates better if the interior doors remain open and the air circulation system is operating. If humidity levels in the facility drop below 35%*, we recommend humidifying the space to avoid excessive shrinkage.

Some warranties exclude excessive expansion or shrinkage which is caused by abnormal environmental conditions, so routinely check the moisture level.

**This number is geographically sensitive, so check with your Horner representative for recommendations*

CHAPTER 6:

SHOE MARK REMOVAL

Shoe marks can be removed with an approved floor cleaner, although different finishes will require different cleaners. Consult your installation and floor care professional for the best products for your floor.

To remove shoe marks:

- Rub the mark with a tennis ball attached to a pole or broom
- Rag dampened in mineral spirits (oil based finishes only)
- Red scrub pad with recommended cleaner



Shoe mark removal ¹

Prevent shoe marks by monitoring and recommending only non-marking shoes be allowed on the playing surface.

CHAPTER 7:

MOISTURE AND WATER DAMAGE

Water or excessive moisture is the biggest danger that can damage to your floor.

Helpful Tips:

- Exterior door thresholds and window seals need to be weather-tight
- Ceiling or pipe/drain leaks must be corrected immediately
- Excessive water from foot traffic should be dried or corrected immediately
- Monitor relative humidity levels regularly
- Roof drains should be kept clear and drain away from the building
- Report any abnormal visual or measurement (temp/RH) to building manager



Don't let this happen to you ²

CHAPTER 8:

TIGHTENING AND CUPPING

If you see cupping, immediately lower the humidity and introduce a steady air flow to the room. This will lower the moisture content in the wood floor system.

If cupping is localized it is best to determine the cause of the moisture. Never sand a cupped floor without consultation with a professional and properly preparing the facility.



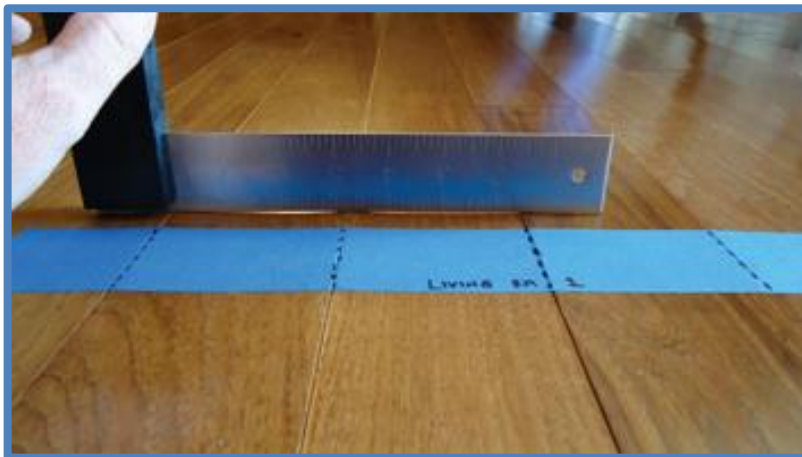
Cupping of the floor ³

CHAPTER 9:

EXCESSIVE GAPS

Your floor may have intermittent “gaps” or internal expansion provision built into the system during installation. This is to allow for normal expansion and contraction that occurs throughout the seasons. Depending on specific site and seasonal conditions at the time of the installation, varying degrees of built-in provisions will occur. These are normal, and questions concerning these should be directed to your authorized installation contractor.

Excessive gaps occur due to low humidity levels or excessive dryness in the facility. This can be remedied by introducing higher humidity or moisture laden air into the space. Contact your floor care professional or Horner Sports Flooring for other possible corrective measures.



An excessive gap ⁴

CHAPTER 10:

BLEACHER SYSTEMS

Be certain that your floor is designed to take rolling and point loads, which sideline bleachers will likely place on the floor system. Bleacher wheels should be designed for wood floors.

Regular cleaning behind and beneath bleachers will reduce undue wear and unsightly marring and scratching of the floor.

EXPANSION JOINTS

Your floor has designed-in expansion joints. Never block or obstruct any expansion joints at the perimeter or vertical obstructions (i.e. columns, game inserts, bleachers).



Bleachers on a hardwood athletic floor ⁵

CHAPTER 11:

GUM AND TAR REMOVAL

Gum, tar, or adhesive can be removed by using a plastic scraper and rubbing the area with Mineral Spirits.

You can also use an ice pack or Freeze-It spray to harden the gum or adhesive and then scrape it off with a plastic scraper. Wipe the area(s) with a soft dry cloth towel when the removal is complete.

In the case of a spill, be sure to wipe with damp cloth immediately to avoid staining the floor. Use a soft cloth or towel.



Gum removal ⁶

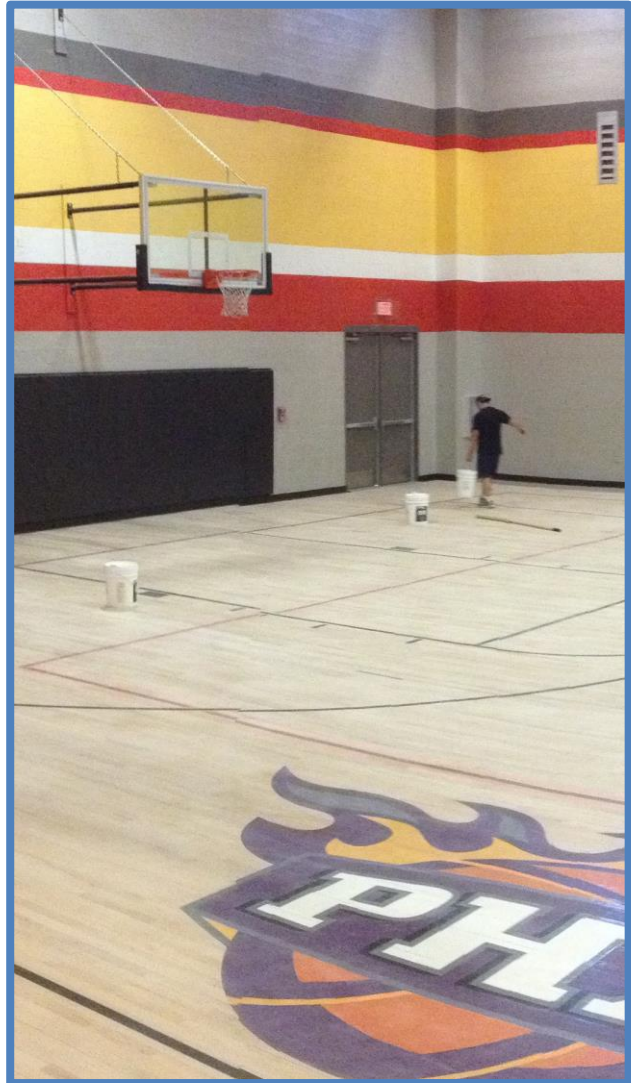
CHAPTER 12:

REGULAR RESTORATIVE COATING

We recommend that your maple floor be cleaned, screened, and recoated annually with an approved finish.

Your warranty may be affected by product and contractor usage. Please consult your warranty and Horner Sports Flooring Representative before beginning this procedure.

Depending on daily maintenance, traffic and usage, your floor may require a more aggressive recoating program.



A Horner floor being finished

Contact Horner with any questions or if you are in need of any recommendations!

Questions?

Contact us!



Karl Borree - kborree@hornerflooring.com



www.hornerflooring.com



@HornerFloor



<http://www.facebook.com/HornerFlooring>



PHOTO CREDITS

1. <http://hardwoodfloorsmag.com/articles/article.aspx?articleid=1611&zoneid=3>
2. <http://www.travisengineers.com/id4.html>
3. http://www.flrsanders.com/FLR_Sanders,_Inc./Repair.html
4. <http://hardwoodfloorsmag.com/articles/article.aspx?articleid=1502&zoneid=1>
5. <http://footage.shutterstock.com/clip-3591845-stock-footage-basketball-bouncing-on-gym-floor-near-bleachers.html>
6. <http://www.bobvila.com/articles/maintain-hardwood-floors/>

