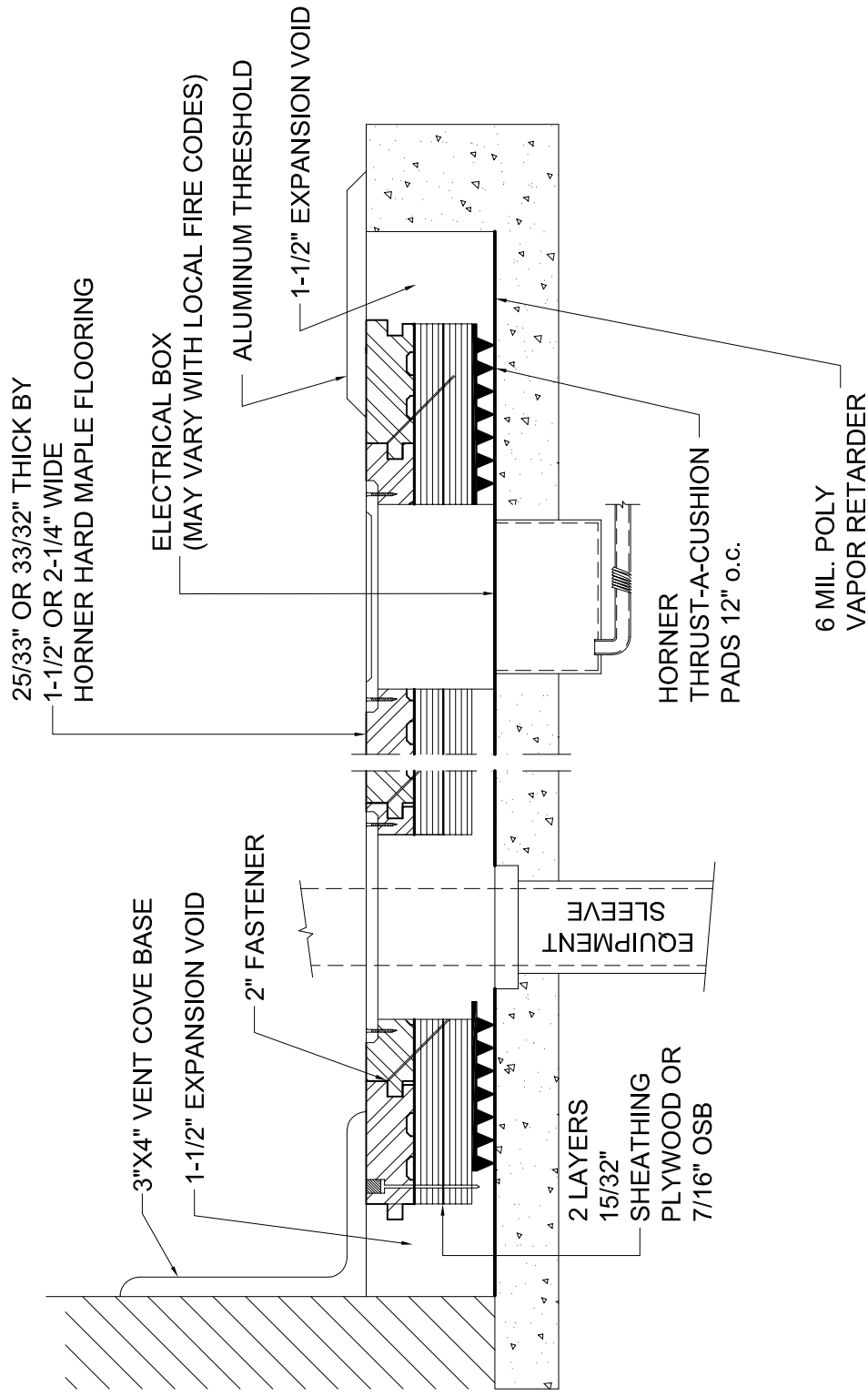


**THRUST-A-CUSHION 2 SYSTEM -  
SIDE VIEW**

HORNER FLOORING COMPANY  
DOLLAR BAY, MI  
11-01-09

SLAB DEPRESSION		
FLOORING	25/32" (20mm)	33/32" (26mm)
3/8" PAD (10mm)	2-1/8" (54mm)	2-3/8" (60mm)
5/8" PAD (16mm)	2-3/8" (60mm)	2-5/8" (67mm)



## THRUST-A-CUSHION 2 SYSTEM

HORNER FLOORING COMPANY  
 DOLLAR BAY, MI  
 11-01-09