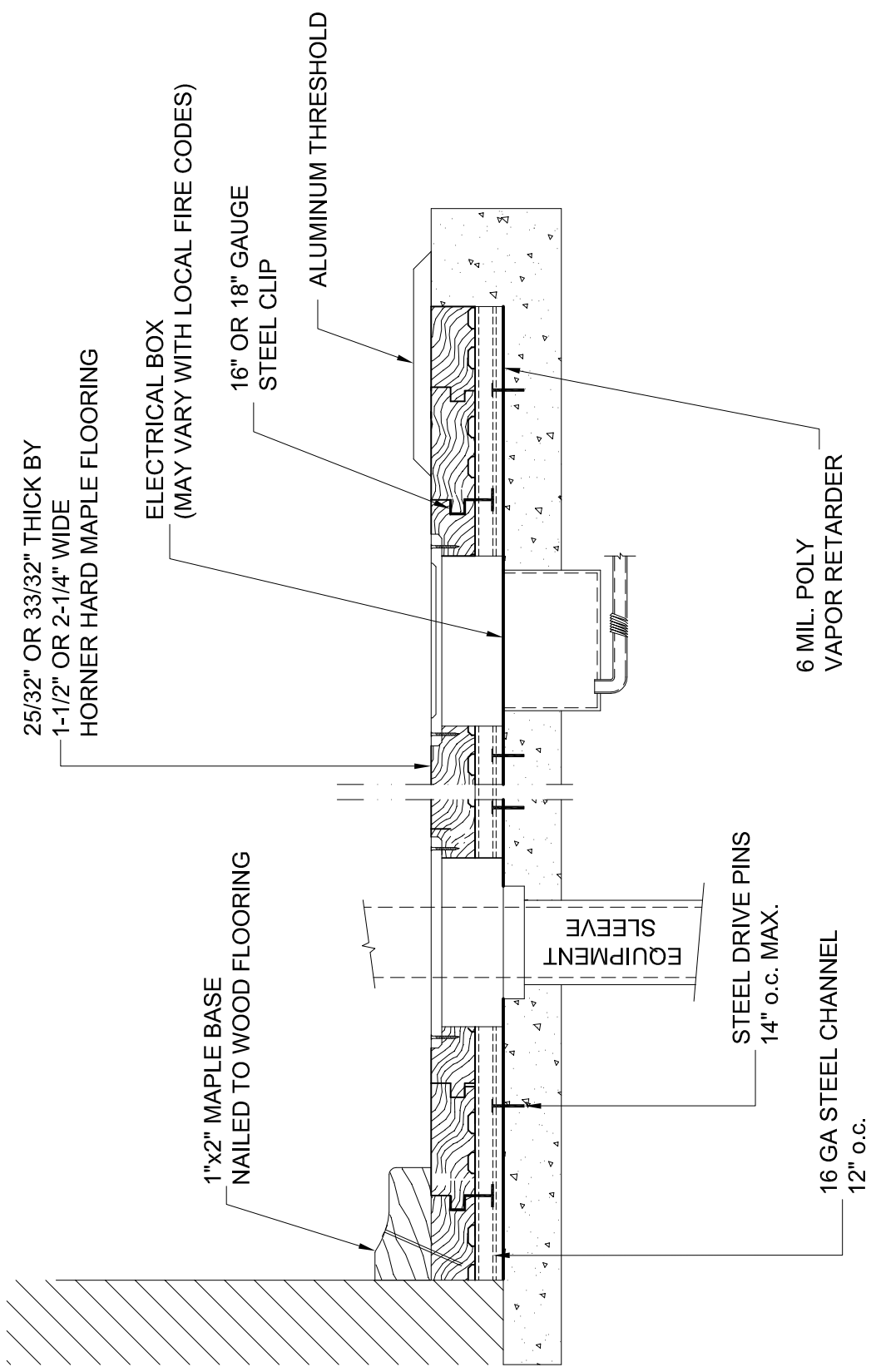


**STA-LOC SYSTEM -
SIDE VIEW**

HORNER FLOORING COMPANY
DOLLAR BAY, MI
11-01-09

SLAB DEPRESSION	
25/32" (20mm) FLOORING	33/32" (26mm) FLOORING
1-1/4" (32mm)	1-1/2" (38mm)



STA-LOC SYSTEM

HORNER FLOORING COMPANY
 DOLLAR BAY, MI
 11-01-09