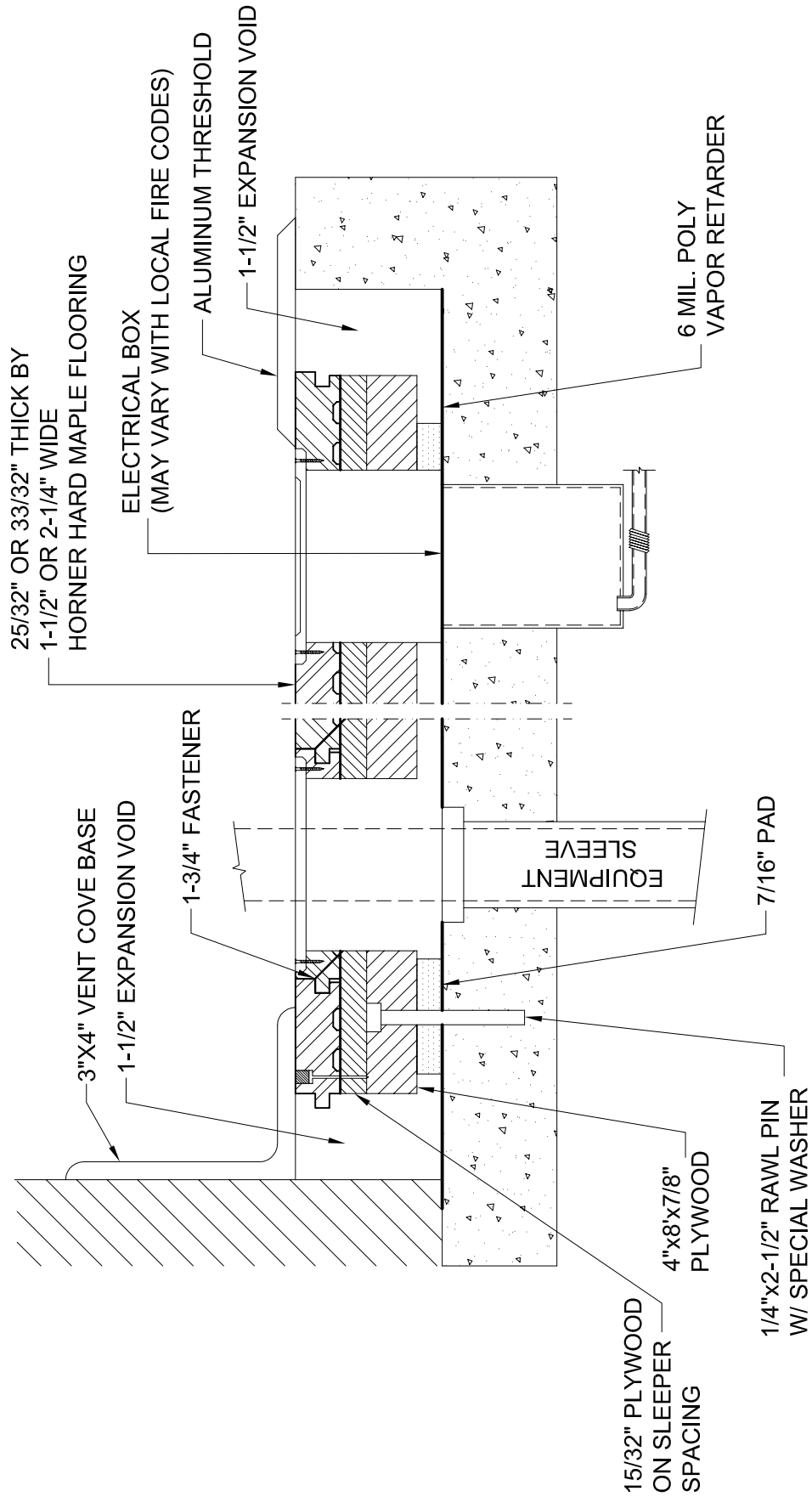


LAMINATED SLEEPER SYSTEM - SIDE VIEW

HORNER FLOORING COMPANY
DOLLAR BAY, MI
11-01-09

SLAB DEPRESSION		
FLOORING	25/32" (20mm)	33/32" (26mm)
7/16" PAD (11mm)	2-5/8" (67mm)	2-7/8" (73mm)
3/4" PAD (19mm)	2-15/16" (75mm)	3-1/4" (83mm)



LAMINATED SLEEPER SYSTEM

HORNER FLOORING COMPANY
 DOLLAR BAY, MI
 11-01-09