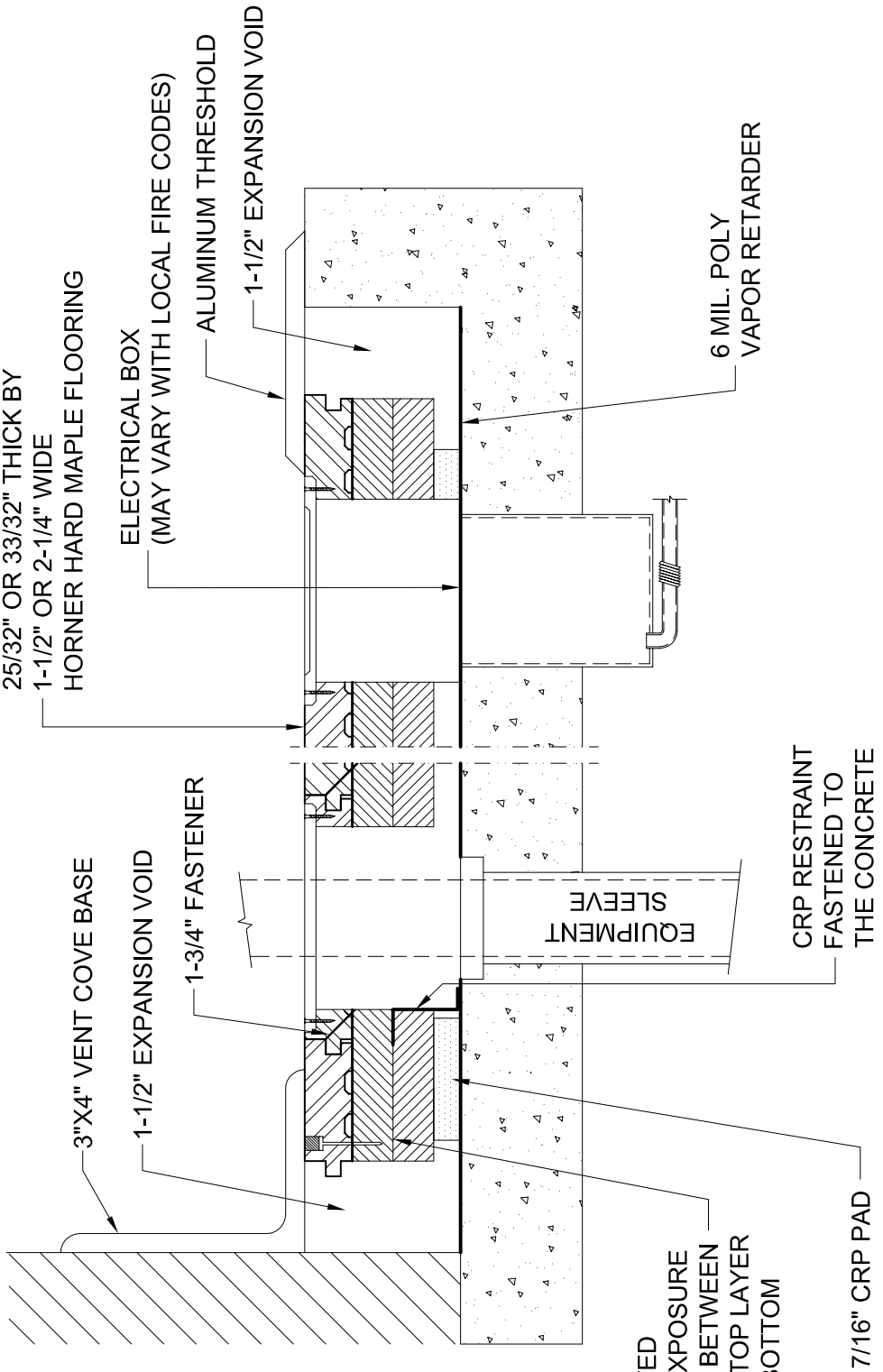


## CONTROLLED RESPONSE AND PERFORMANCE (CRP) SYSTEM SIDE VIEW

HORNER FLOORING COMPANY  
DOLLAR BAY, MI  
11-01-09

SLAB DEPRESSION		
FLOORING	25/32" (20mm)	33/32" (26mm)
7/16" PAD (11mm)	2-1/8" (54mm)	2-3/8" (60mm)
3/4" PAD (19mm)	2-7/16" (62mm)	2-11/16" (68mm)



25/32" OR 33/32" THICK BY  
1-1/2" OR 2-1/4" WIDE  
HORNER HARD MAPLE FLOORING

3"X4" VENT COVE BASE  
1-1/2" EXPANSION VOID

ELECTRICAL BOX  
(MAY VARY WITH LOCAL FIRE CODES)  
ALUMINUM THRESHOLD  
1-1/2" EXPANSION VOID

1-3/4" FASTENER

2 LAYERS 15/32" APA-RATED  
SHEATHING PLYWOOD, EXPOSURE  
1 SHEETS WITH SPACING BETWEEN  
ADJACENT SHEETS. LAY TOP LAYER  
AT A 45° ANGLE TO THE BOTTOM  
LAYER.

7/16" CRP PAD

CRP RESTRAINT  
FASTENED TO  
THE CONCRETE

EQUIPMENT  
SLEEVE

6 MIL. POLY  
VAPOR RETARDER

# CONTROLLED RESPONSE AND PERFORMANCE (CRP) SYSTEM

HORNER FLOORING COMPANY  
DOLLAR BAY, MI  
11-01-09