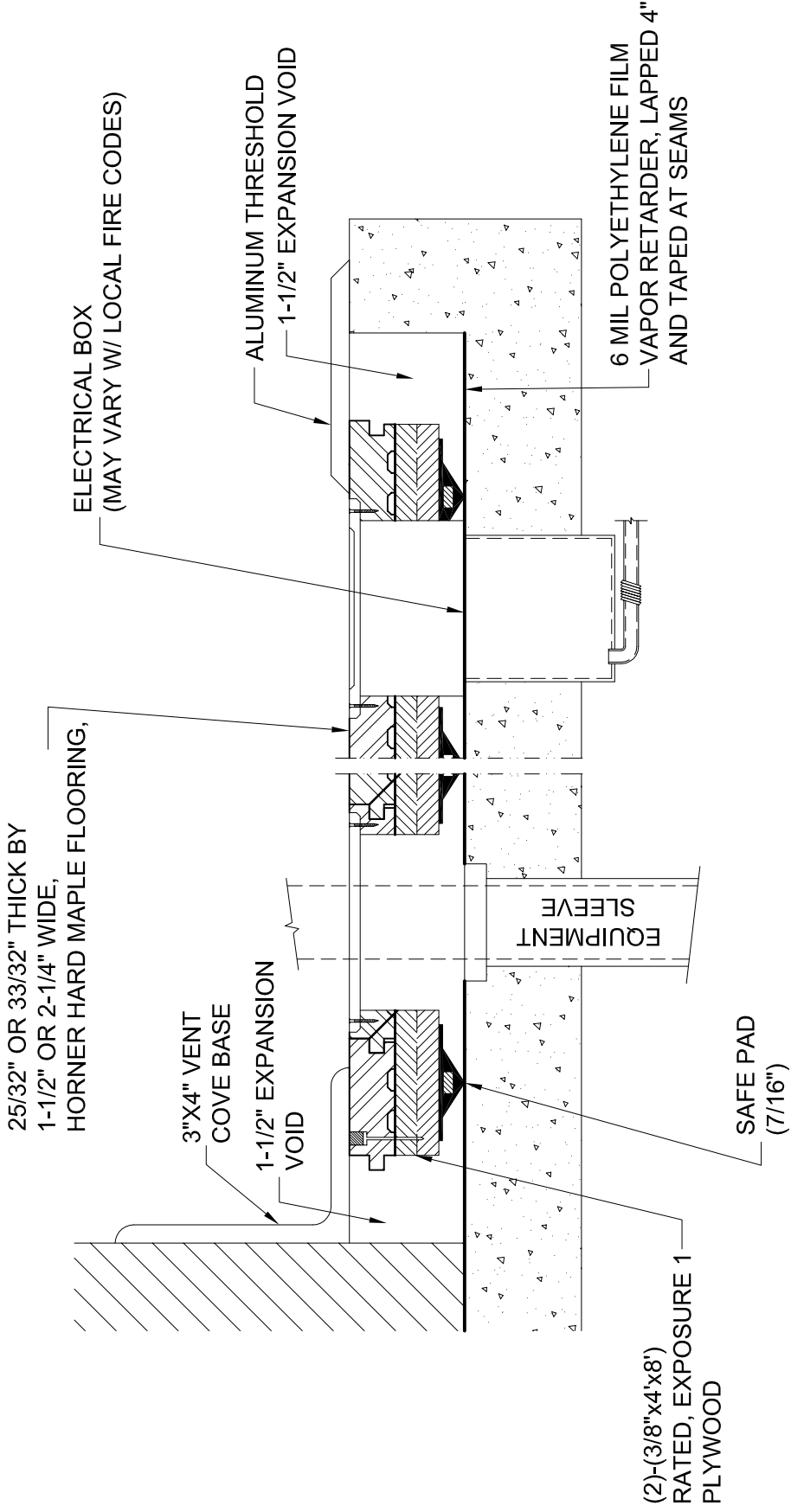


SLAB DEPRESSION	
FLOORING	25/32" (20mm)
REGULAR PROFILE	7/16" PADS (11mm)
LOW PROFILE	1/4" FOAM (11mm)
HIGH PROFILE*	3/4" PADS (19mm)
	25/32" (20mm)
	2" (51mm)
	1-13/16" (46mm)
	2-5/16" (59mm)
	33/32" (26mm)
	2-1/4" (57mm)
	2-1/16" (52mm)
	2-9/16" (65mm)

BALANCED PERFORMANCE SYSTEM (BPS) - SIDE VIEW

HORNER FLOORING COMPANY
DOLLAR BAY, MI
11-01-09

*THIS OPTION ALSO INCLUDES 2 LAYERS OF 15/32" PLYWOOD



BALANCED PERFORMANCE SYSTEM

HORNER FLOORING COMPANY
 DOLLAR BAY, MI

11-01-09