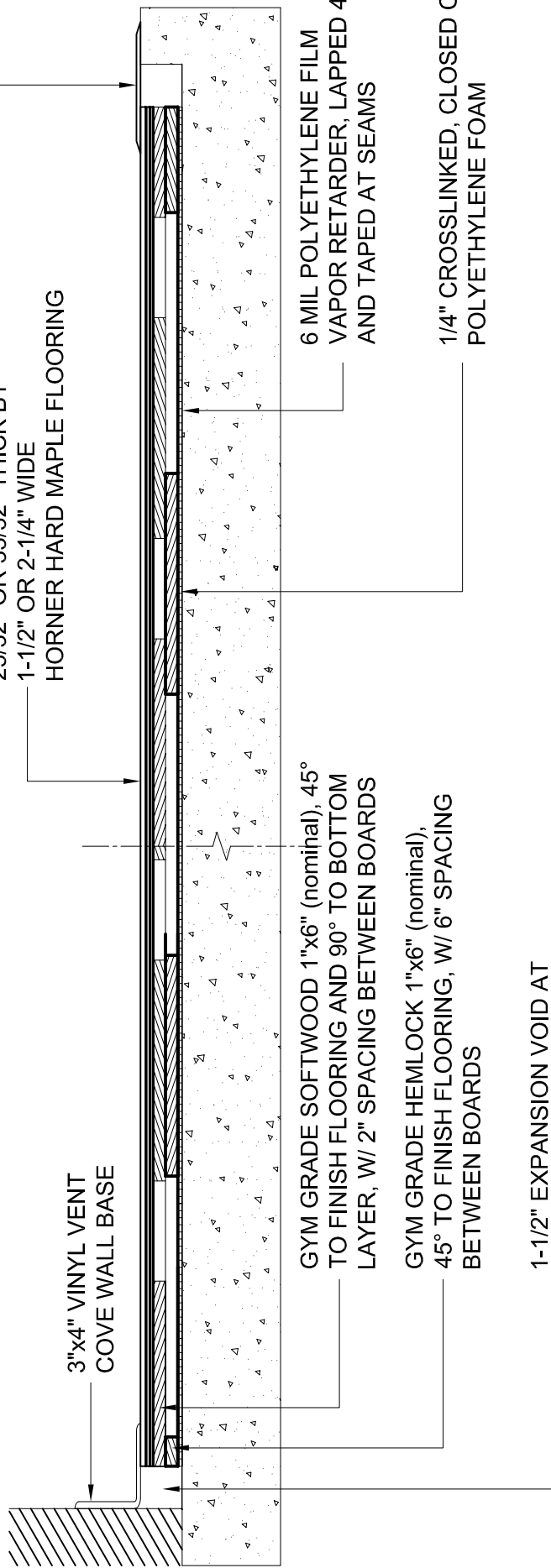


ALUMINUM THRESHOLD

25/32" OR 33/32" THICK BY
1-1/2" OR 2-1/4" WIDE
HORNER HARD MAPLE FLOORING

3"x4" VINYL VENT
COVE WALL BASE



GYM GRADE SOFTWOOD 1"x6" (nominal), 45°
TO FINISH FLOORING AND 90° TO BOTTOM
LAYER, W/ 2" SPACING BETWEEN BOARDS

GYM GRADE HEMLOCK 1"x6" (nominal),
45° TO FINISH FLOORING, W/ 6" SPACING
BETWEEN BOARDS

1-1/2" EXPANSION VOID AT
PERIMETER OF FLOOR

6 MIL POLYETHYLENE FILM
VAPOR RETARDER, LAPPED 4"
AND TAPED AT SEAMS

1/4" CROSSLINKED, CLOSED CELL
POLYETHYLENE FOAM

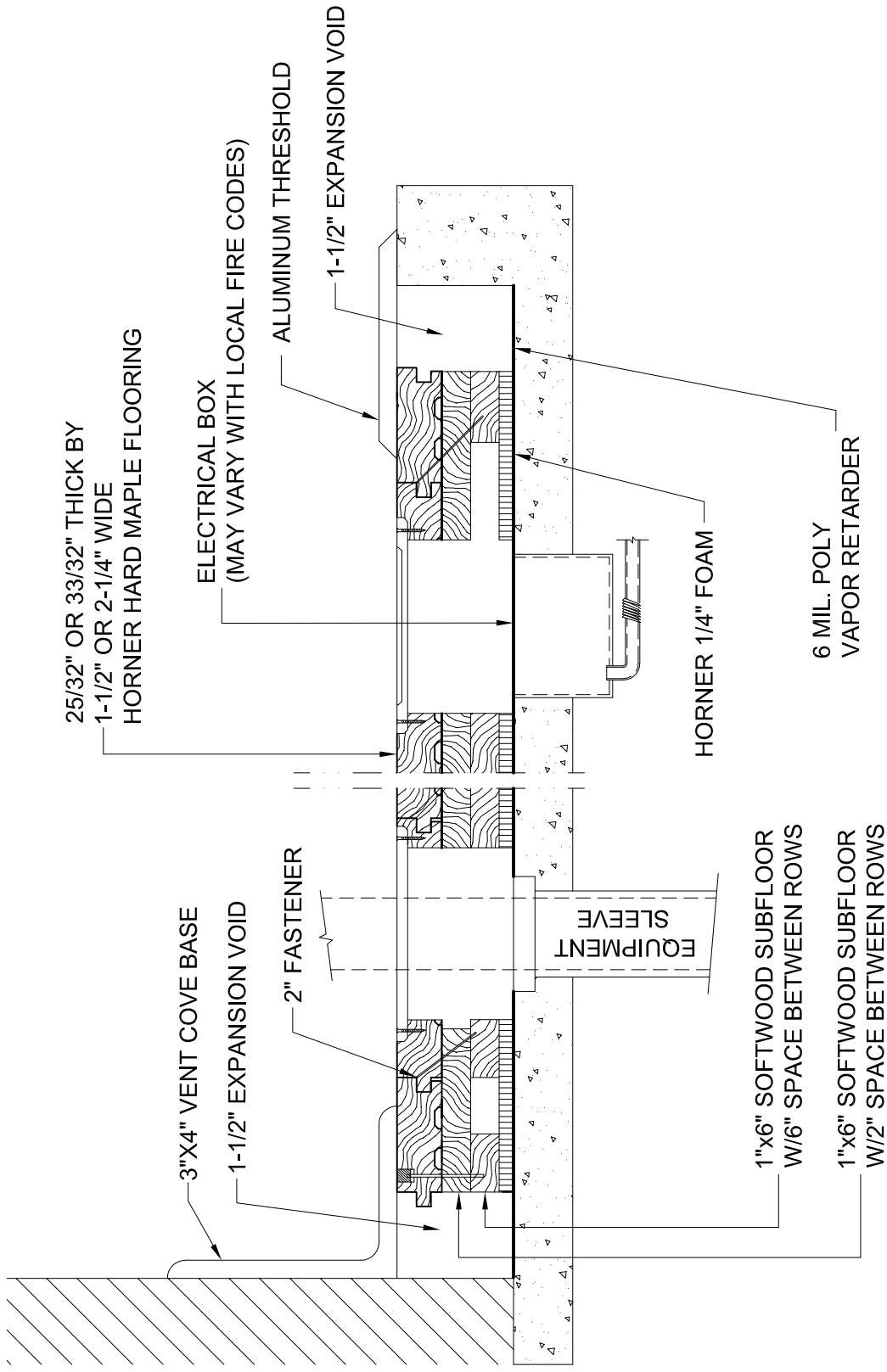
*SUBFLOOR LAYERS ARE NAILED TOGETHER AT
INTERSECTIONS W/ 1-1/4" STAPLES, AND ARE
SPACED 1/4" AT BUTTED ENDS

SLAB DEPRESSION

FLOORING	25/32" (20mm)	33/32" (26mm)
1"x6" SUB	2-1/2" (64mm)	2-3/4" (70mm)
PLYWOOD SUB	2" (51mm)	2-1/4" (57mm)
OSB SUB	1-7/8" (48mm)	2-1/8" (54mm)

**ALL-WOOD SYSTEM -
SIDE VIEW**

HORNER FLOORING COMPANY
DOLLAR BAY, MI
11-01-09



ALL-WOOD SYSTEM

HORNER FLOORING COMPANY
 DOLLAR BAY, MI
 11-01-09